

# *Everbrite*<sup>TM</sup> *In-office Tooth Whitening Kit*



*Safe, Fast and Easy Bleaching System*

**DENTAMERICA<sup>®</sup>**

*Everbrite™ In-office Tooth Whitening Kit* is designed for application by the dentist. The active ingredient in our bleach is extremely small in size and easily enters your tooth's pores, following the same route as stain-causing foods and drinks.

**Before**



**After**



*Bright and Confident Smile from-**Everbrite™***

# *In-office Tooth Whitening Kit For Professional Use Only*

## CONTAINS:

- **35% Hydrogen Peroxide**
- **Photoactivator**
- **Light Cure Dental Dam**
- **Fluoride Gel**
- **Protective Lip Balm**
- **Everbrite Shade Guide**
- **Mixing and Application Accessories**



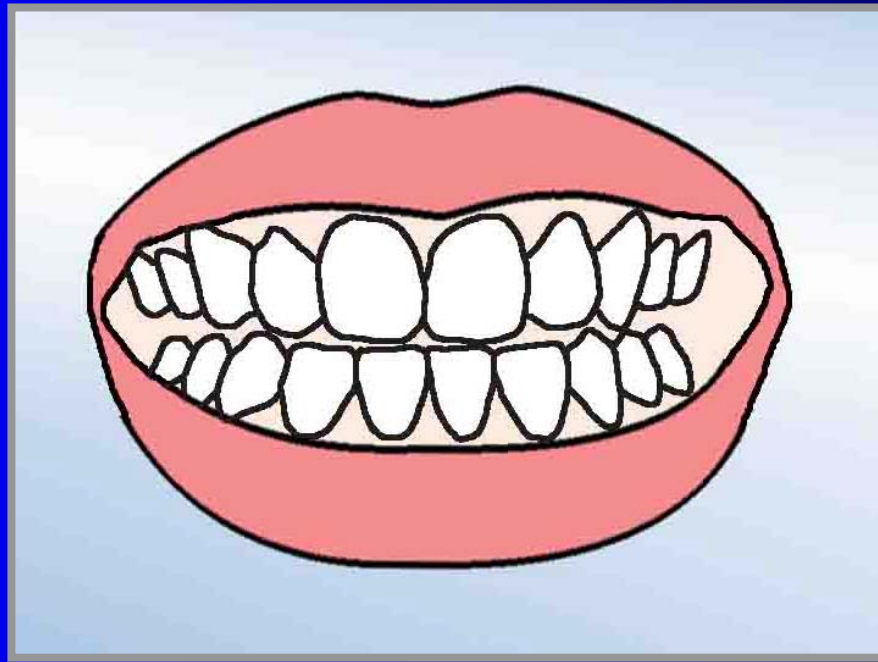
## ✧ Notes :

Patients and all dental personnel in the operator  
must wear orange eye protection glasses.

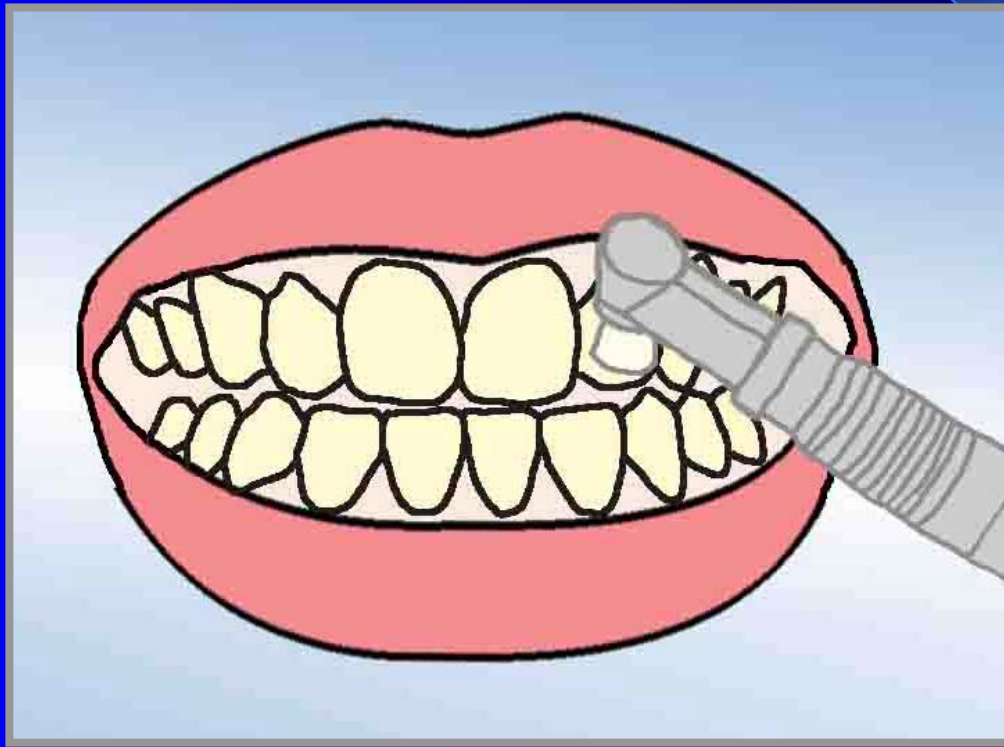
Be sure to use gloves when handling materials.

# Directions for use:

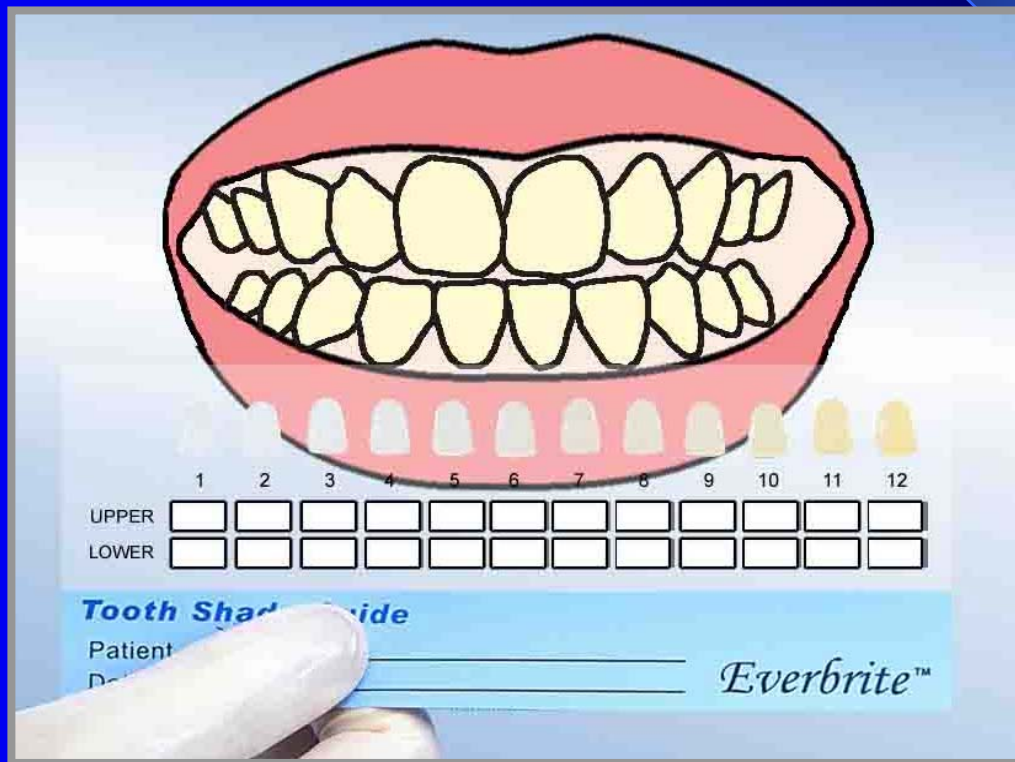
1. Examine the oral cavity and make sure there are no cavities or gum tissue abnormalities.



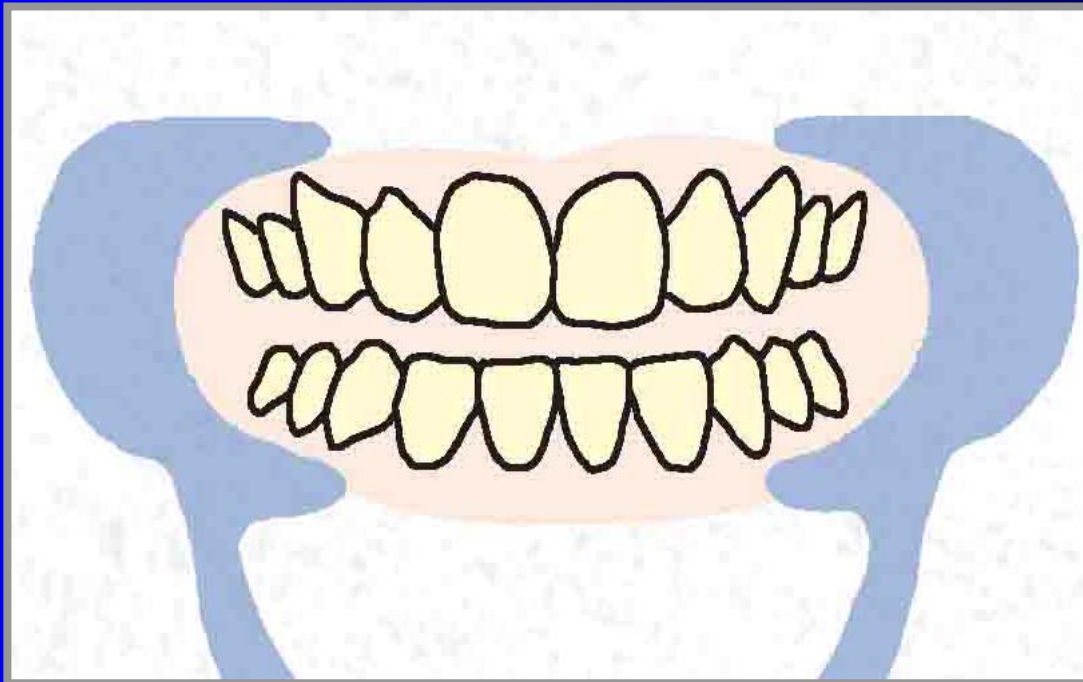
2. Prophylaxis and make sure the teeth are clean and clear of debris before applying the bleaching gel.



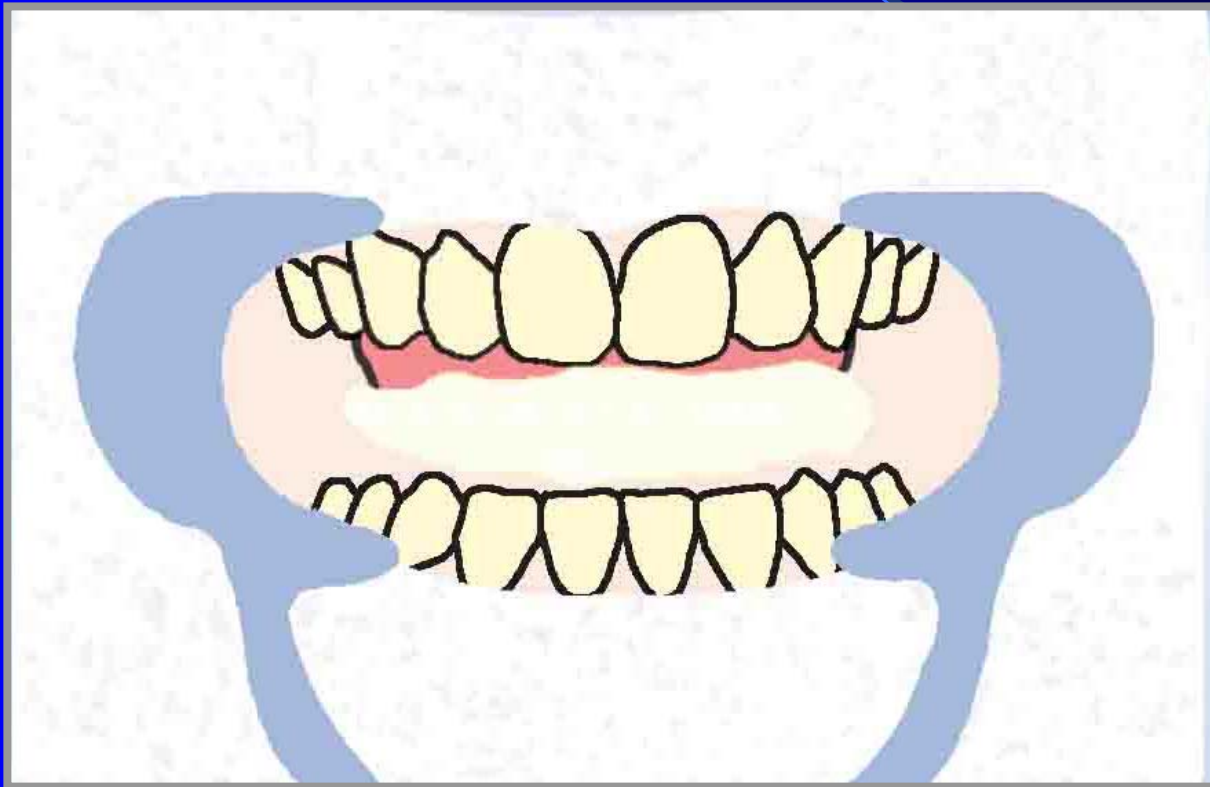
3. Use the Everbrite shade guide to record the patient's shade data before the whitening procedure.



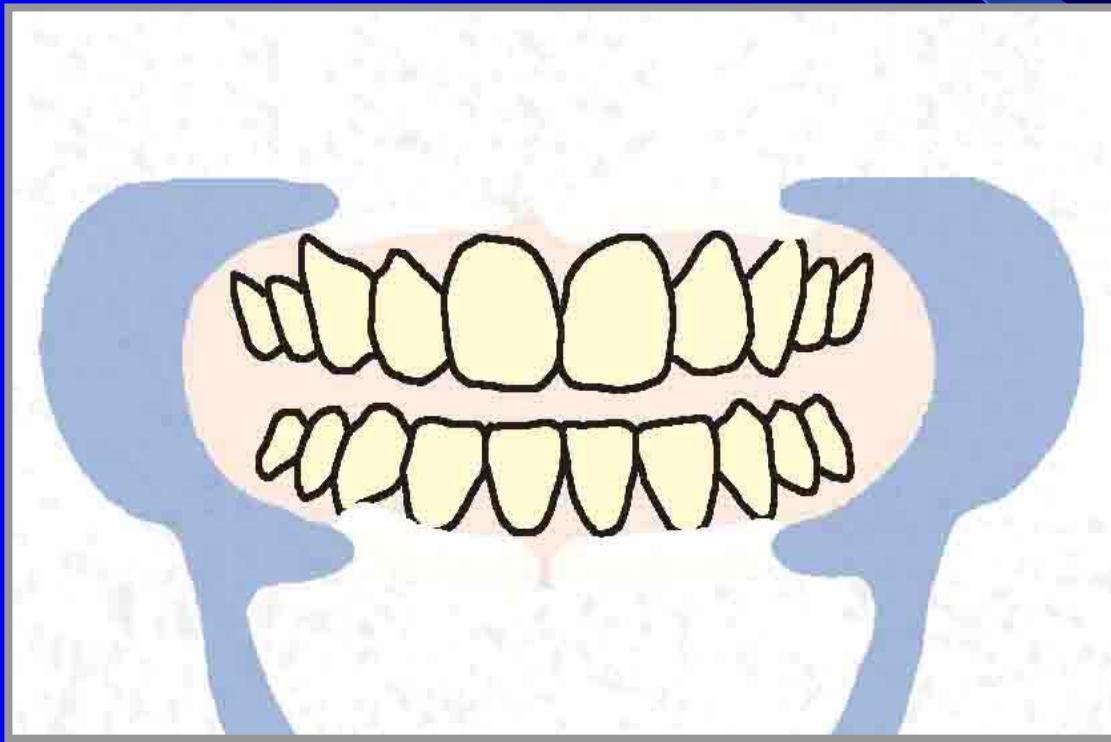
4. Apply protective lip balm around the lip area. Place the protective mouth bib under the cheek retractor and position the retractor and mouth bib to fit comfortably around the mouth area for protection.



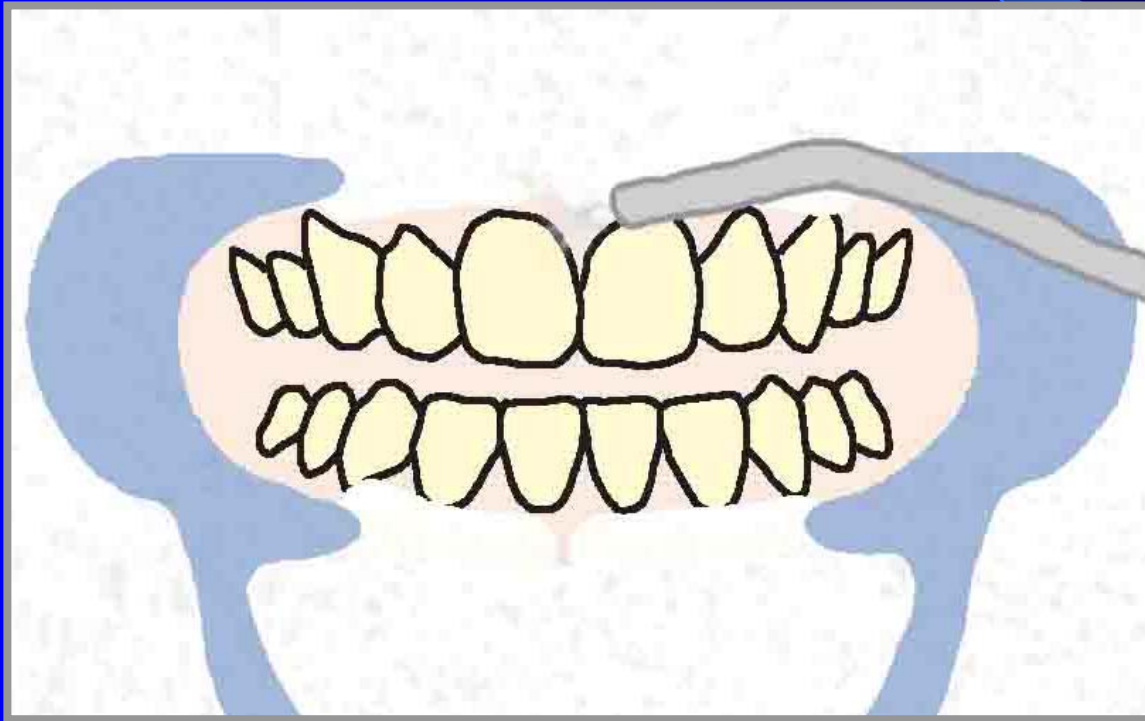
5. Use gauze to insulate and protect the tongue.



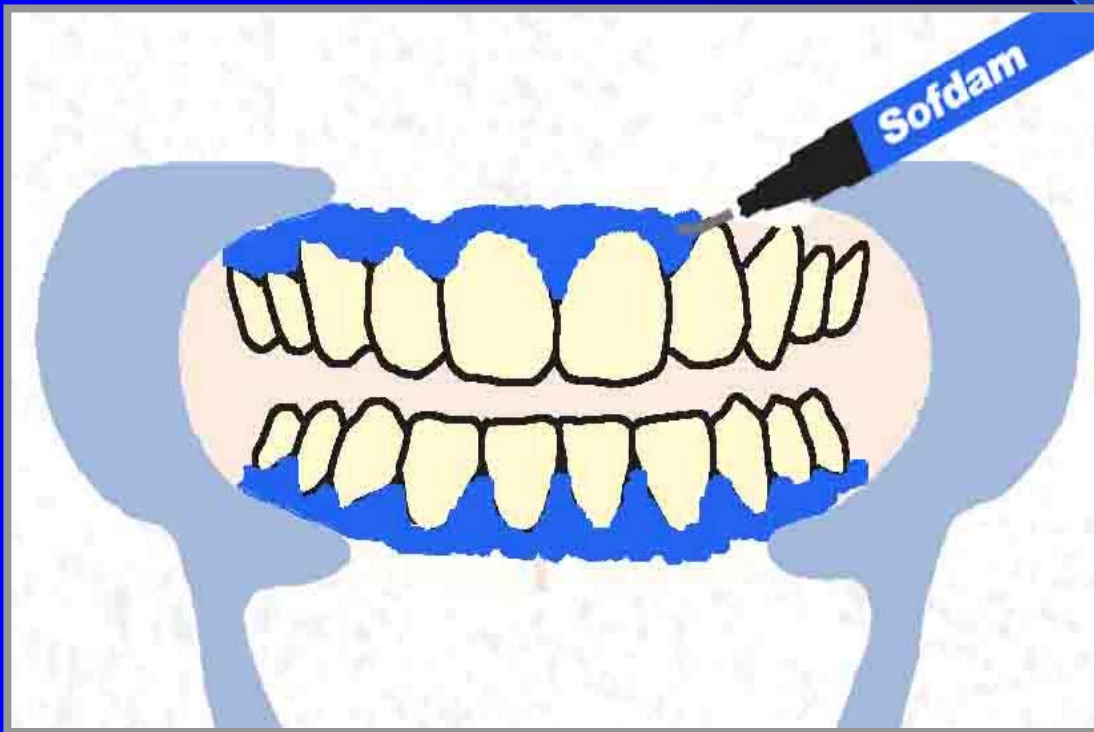
6. Use cotton rolls to separate the teeth to be whitened from the labial and lingual sides.



7. Use a 3-way air syringe to dry the gingival tissue of the teeth to be whitened.



8. Insert the tip onto the light cure dental dam and apply evenly to the gums to isolate them from the bleaching gel. The dental dam should cover the whole gum area around the teeth to be bleached for complete protection.



9. Using the LITEX 685 Plasma Arc Light, hold the light tip 1-2 cm away from the light cure dental dam. 2-3 seconds of curing time is sufficient (light cure 20 seconds if using a standard dental curing light). Repeat until the entire surface has been cured.



10. Use the spatula to mix one of the vials of hydrogen peroxide with one of the jars of photoactivator. Be sure to use gloves and eye protection when handling materials.



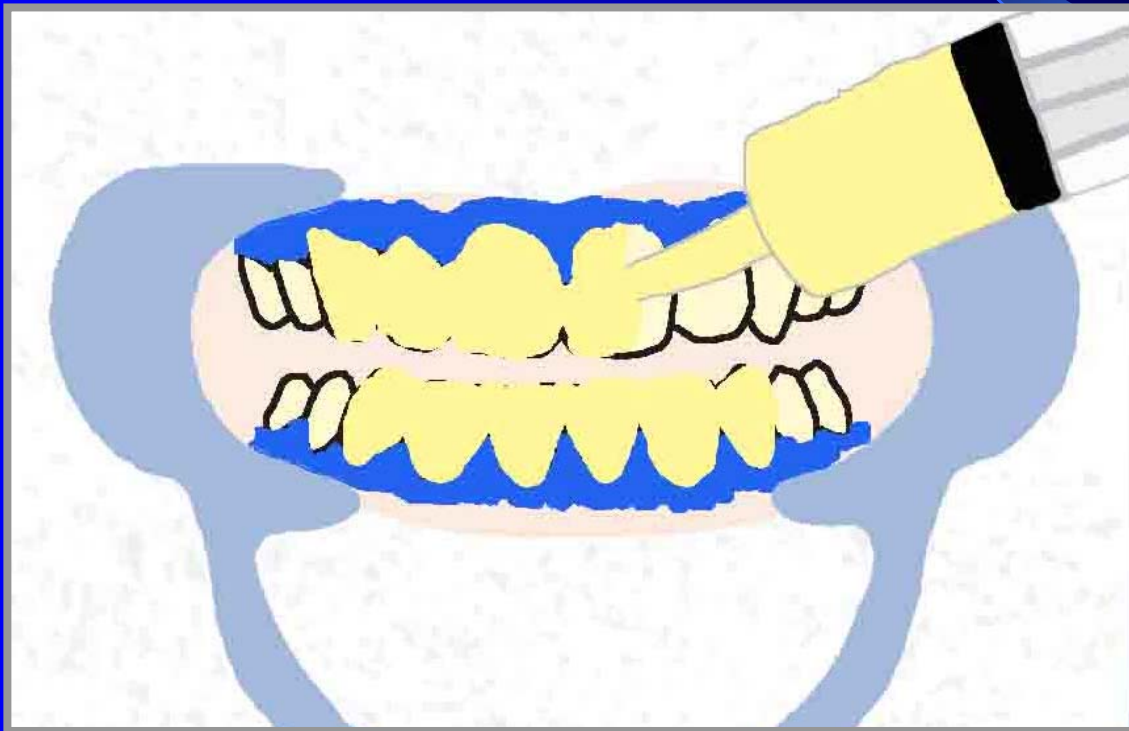
- 11.** Stir the solution for about 60 seconds until thoroughly mixed, forming a gel-like material.



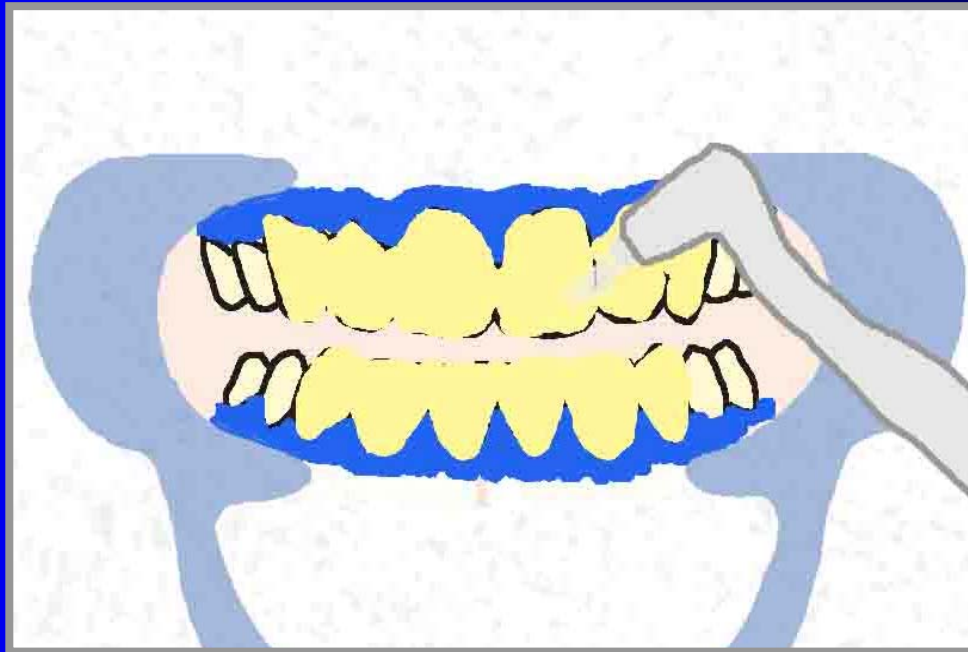
**12.** Fill the syringe with the mixed gel using the spatula.



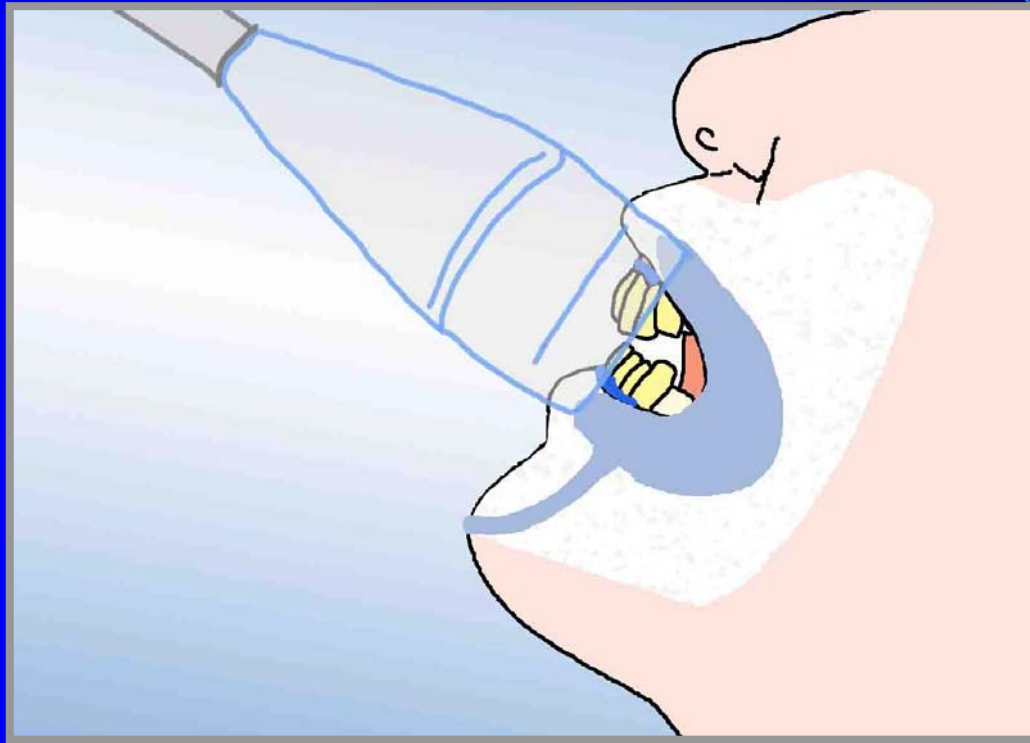
- 13.** Apply the gel to the teeth that are to be whitened through the curved syringe.



- 14.** Make sure the gel is evenly distributed and about 2 mm thick. Use the brush to apply the gel evenly on the teeth. Maintain about 1 mm away from the gums, and a thickness of about 2 mm.



**15.** Place the whitening arch about 5 mm away from the teeth to be whitened.



- 16.** Select the “ARCH WHITENING” key on the LITEX 685 for the whitening program.



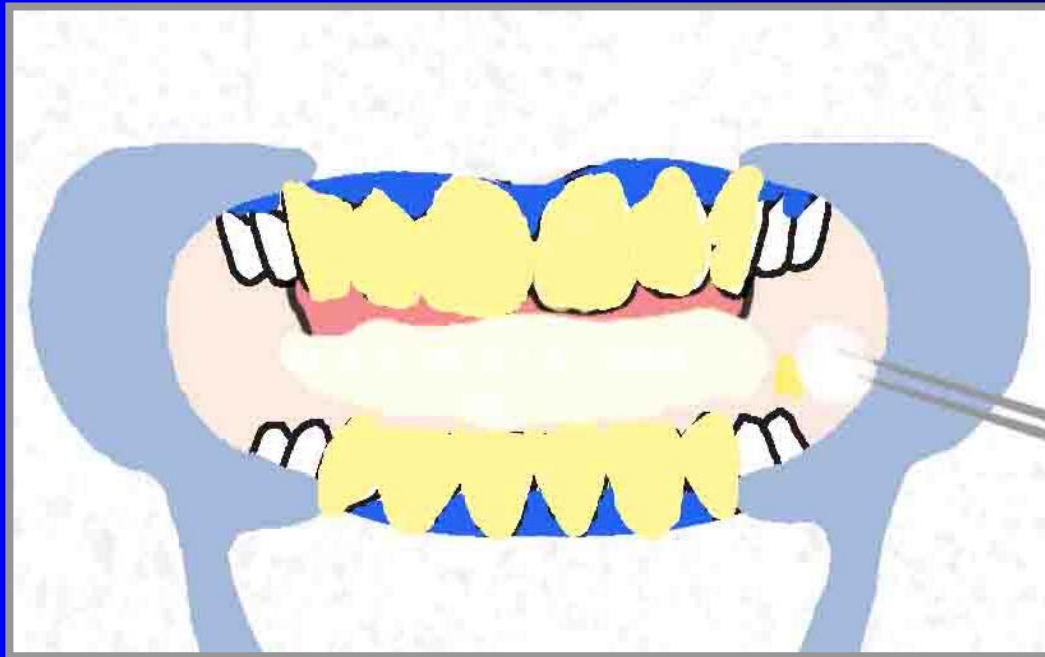
- 17.** The LITEX 685 has a built-in whitening program. This program runs 15 bleaching cycles for a total of 10 minutes. Each cycle consists of a 30-second light activation period and a 10-second resting period. The digital displays indicate how much time is left within each cycle and how many cycles remain.



**18.** To begin the whitening program, trigger the magnetic ring on the handpiece. The light will activate and the program display will begin to count down.



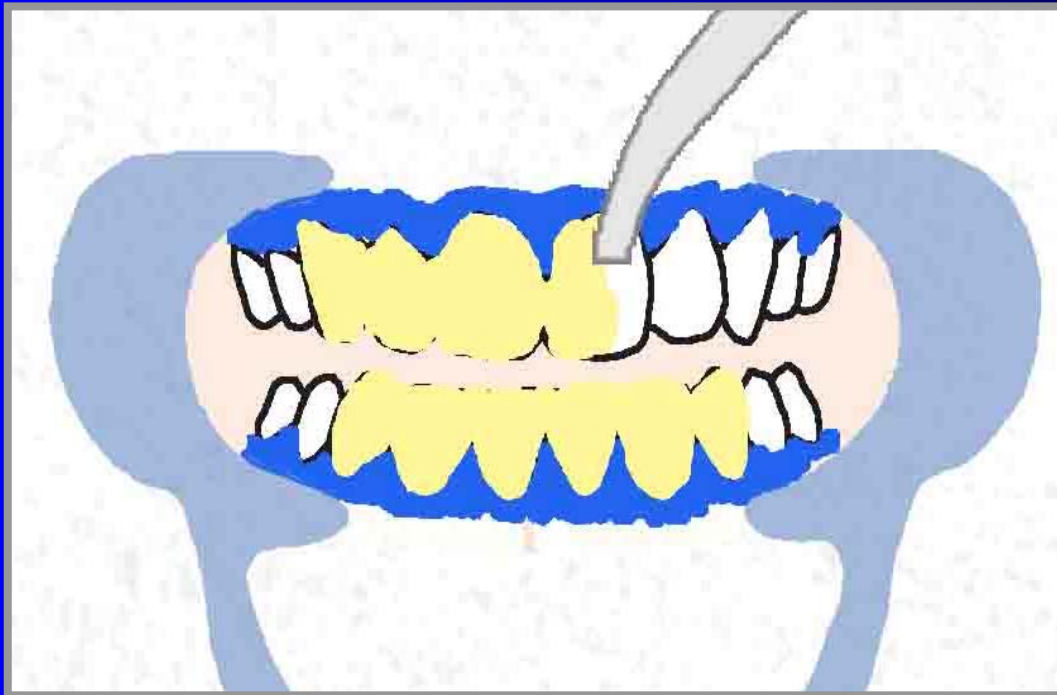
- 19.** After the first 10-minute program has been completed, make sure the whitening gel remains only on the area of treatment. Suction and/or brush gel off of areas not intended for whitening.



- 20.** Complete an additional three more cycles for a total of four 10-minute programs (40 minutes).  
For patients with heavy staining, an additional 10-minute cycle can be added for better results.



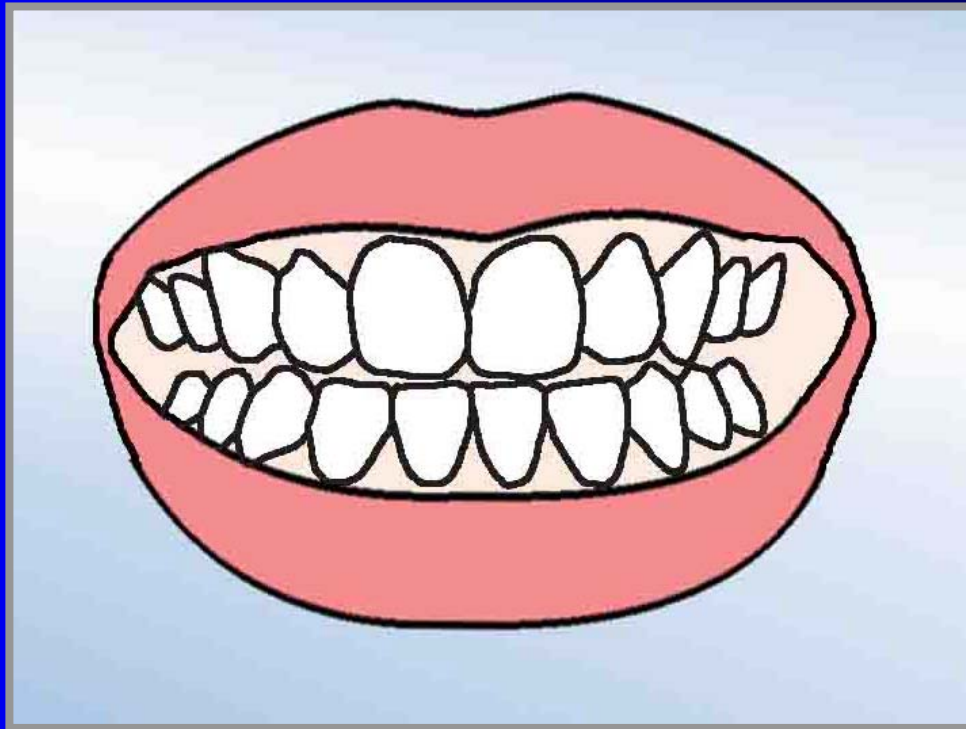
- 21.** After the final whitening program has been completed, suction away the bleaching gel. Do not rinse.



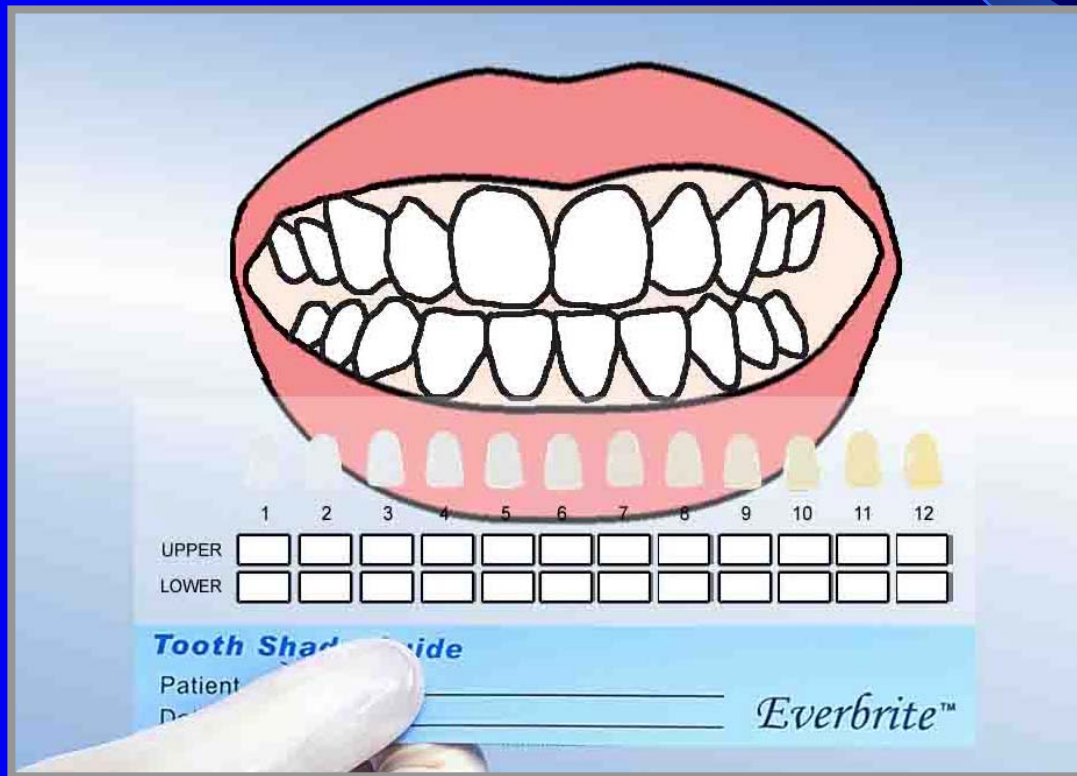
22. Remove dental dam, cotton rolls and gauze.



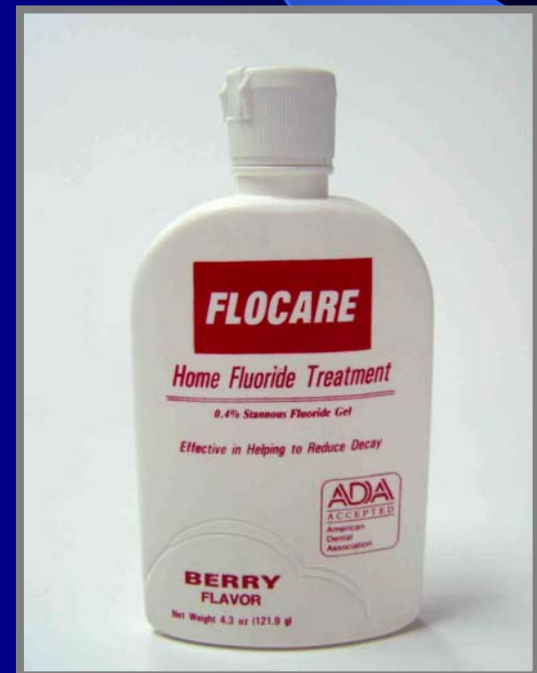
**23.** Remove cheek retractor and mouth bib and have patient rinse mouth. Check to make sure that no material is left inside the mouth.



24. Refer to the Everbrite shade guide and record the patient's new shade data.



- ✧ Mild sensitivity is considered a normal side effect after a whitening procedure. Any discomfort should disappear in about 2 days.
- ✧ Application of fluoride treatment (such as **DENTAMERICA *FLOCARE* 0.4% Stannous Fluoride**) will reduce sensitivity.



- ✧ Do not use local anesthetic during whitening procedure.
- ✧ If the patient experiences severe discomfort, the treatment should be stopped immediately.
- ✧ The use of strongly staining foods or drinks may increase discoloration. Avoid tobacco, coffee, red wines or other staining agents as much as possible for a few days after treatment.



*Bright and Confident Smile from-~~E~~verbrite™*

**DENTAMERICA®**

THANK YOU